

Human

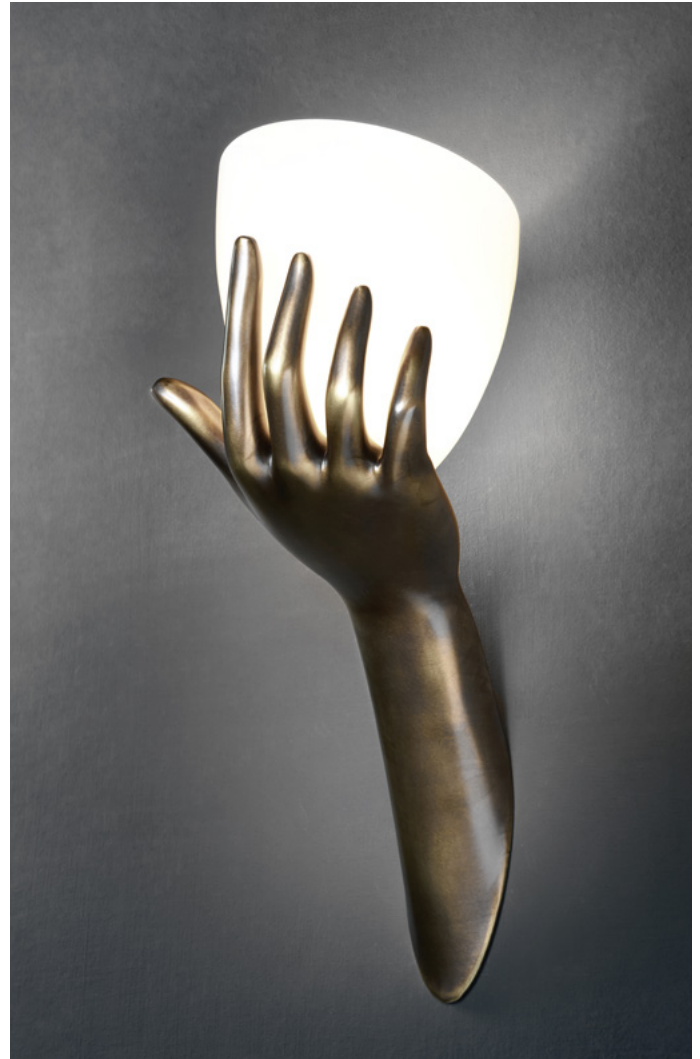
3D printed technopolymer, metal stratified

Light fixture description

Human is a concept and unique fixture, manufactured in order to show the AggioLight capability to craft make exclusive and complex 3D shapes. The object is created through 3D printing, generating a technopolymer shape. After a metal stratification process, the fixture turns into a metal shape and can be enriched by any kind of galvanic finishing.

Lighting fixture description

Reference code	C2oAL-0006-Do1Roo
Degree of protection IP/IK	IP20
Mounting type	wall lamp
Color / finish	Opaline blown glass. Antique bronze stratified metal finish on 3D printed technopolymer
Physical dimensions	h. 465 mm x p. 220 mm x l. 150 mm - 1.2 kg h. 18.3" x p. 8.7" x l. 5.9" - 2.6 lb
Plug	wall bracket and wall plug LNT
Notes	available in different finishing, as per table at page 3.



Light source

Wattage	1 x G9 max 33W - LED 3.5W recommended
Lumen	350lm recommended
Color Temperature (K)	2700°K recommended
Voltage	220-240V or 100-120V

Control gear / Ballast / Transformer

Manufacturer	-
Type	-
Reference	-
Voltage / frequency	-
Wattage	-
Dimming / addressable	Phase cut dimmable bulb recommended
Other	-

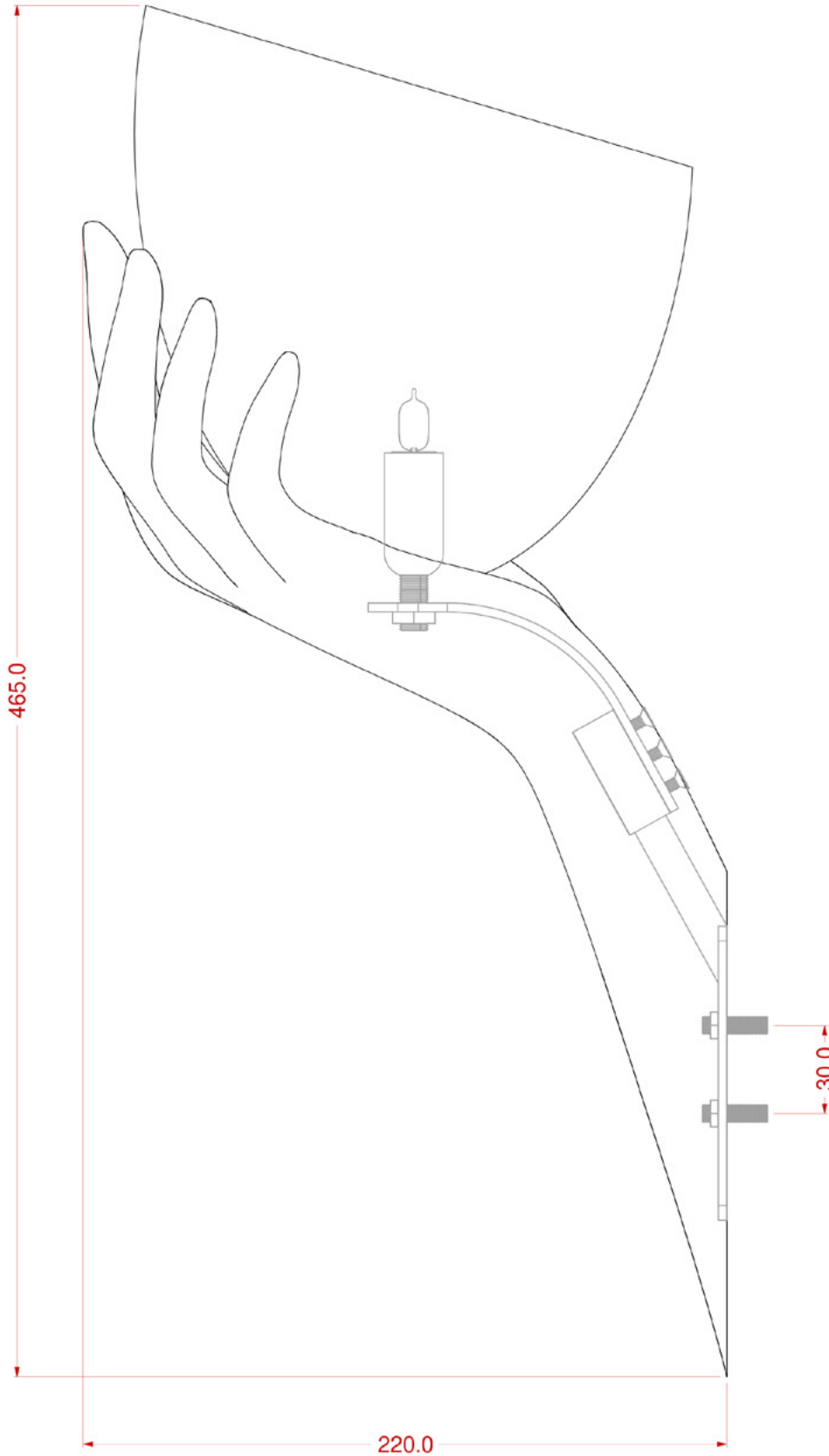
Human

3D printed technopolymer, metal stratified



AGGIOLIGHT

Dimensions



Human

3D printed technopolymer, metal stratified

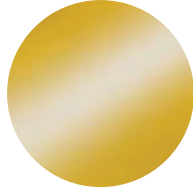
Metal finish options



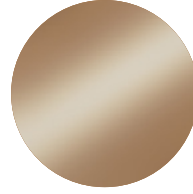
ANTIQUÉ BRONZE
Available: • Glossy • Matt



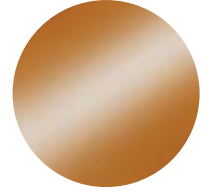
ANTIQUÉ BRASS
Available: • Glossy • Matt



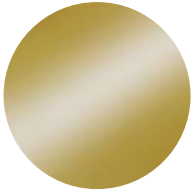
GOLD 24KT PLATED
Available: • Polished • Satin



ROSE GOLD PLATED
Available: • Polished • Satin



COPPER
Available: • Polished • Satin



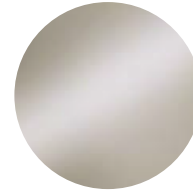
BRASS
Available: • Polished • Satin



BLACK NICKEL PLATED
Available: • Polished • Satin



CHROME PLATED
Available: • Polished • Satin



NICKEL PLATED
Available: • Polished • Satin



STAINLESS STEEL
Available: • Polished • Satin